

# RouteFinder™ VPN

## Internet Security Appliance



### Benefits:

- Secure IPSec and PPTP VPN
- Strong 168-bit 3DES encryption
- Stateful Packet Inspection Firewall
- E-mail Anti-virus protection

The RouteFinder Internet security appliance is an integrated VPN gateway/firewall designed to maximize network security without compromising network performance. It uses data encryption, user authentication and the Internet to securely connect telecommuters, remote offices, customers or suppliers to the corporate office while avoiding the cost of private leased lines or dial-up charges. The browser-based interface eases VPN configuration and management. The VPN functionality is based on IPSec and PPTP protocols and uses Triple DES 168-bit encryption to ensure that your information remains private. The RouteFinder firewall security utilizes Stateful Packet Inspection, and provides optional e-mail anti-virus protection.

*VPN Gateway/  
Firewall for Secure  
Communications over  
the Internet*

### Features

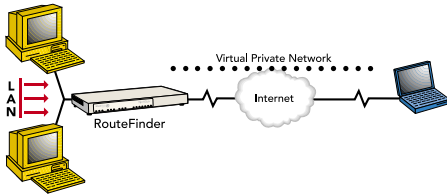
- Supports up to 256 IPSec and/or 128 PPTP VPN tunnels for secure LAN-to-LAN and client-to-LAN access over the Internet
- Utilizes 168-bit Triple Data Encryption standard (3DES)
- 3DES encryption throughput of 15M bps
- Built-in Stateful Packet Inspection firewall with Network Address Translation (NAT)
- Automatic system updates to protect your network against the latest threats
- Application layer security using SMTP, HTTP, DNS and SOCKS proxies
- Improves network performance to frequently accessed web sites with built-in caching server
- Secure local or remote management using HTTPS, SSH and SCP
- Reporting function provides valuable troubleshooting information
- Three built-in 10/100 Ethernet ports (LAN, WAN, DMZ)
- Shared broadband or dedicated Internet access for up to 255+ LAN users with one IP address
- Internet access control tools provide client and site filtering
- Traffic monitoring and reporting
- IP address mapping/port forwarding and DMZ port
- Two-year warranty

## Highlights

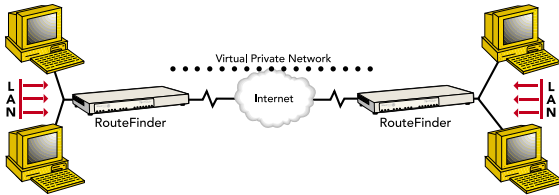
**RouteFinder Applications.** The RouteFinder combines Virtual Private Networking (VPN), firewall and e-mail anti-virus protection\* in one box. It is a cost-effective, easy-to-manage solution. The RouteFinder is ideal for small- to medium-sized businesses looking to add one or all of the following applications to their network:

\* Optional yearly subscription.

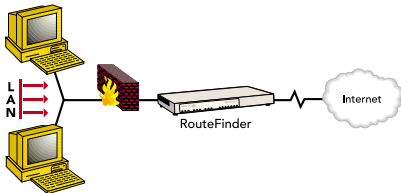
**Remote User VPN.** The client-to-LAN VPN application replaces traditional dial-in remote access by allowing a remote user to connect to the corporate LAN through a secure tunnel over the Internet. The advantage is that a remote user can make a local call to an Internet Service Provider, without sacrificing the company's security, as opposed to a long distance call to the corporate remote access server.



**Branch Office VPN.** The LAN-to-LAN VPN application sends network traffic over the branch office Internet connection instead of relying on dedicated leased line connections. This can save thousands of dollars in line costs and reduce overall hardware and management expenses.



**Firewall Security.** As businesses shift from dial-up or leased line connections to always-on broadband Internet connections, the network becomes more vulnerable to Internet hackers. The RouteFinder provides a full-featured firewall based on Stateful Packet Inspection technology and the NAT protocol to provide security from intruders attempting to access the office LAN.



**E-mail Anti-Virus Protection.** An optional e-mail virus protection subscription ensures the network is protected against the latest virus outbreaks.

**Plug-and-Play Security Appliance.** The RouteFinder plugs in at the Internet connection of each office. It provides three independent network interfaces (LAN, WAN and DMZ) that separate the protected office network from the Internet while offering an optional public network for hosting Web, e-mail or ftp servers. Each network interface is independently monitored and visually displayed on the front of the RouteFinder.

**Secure VPN Connections.** The RouteFinder uses IPSec and PPTP industry standard protocols, data encryption, user authentication, and the Internet to provide high-performance, secure VPN connections. For LAN-to-LAN connectivity, the RouteFinder utilizes the IPSec protocol to provide up to 256 tunnels with strong 168-bit 3DES encryption using IKE and PSK key management. In addition, it provides very high performance with 15M bps of 3DES encryption throughput. For client-to-LAN connectivity, Multi-Tech provides optional IPSec client software. The RouteFinder also supports remote users that want to use the PPTP VPN client built into the Windows operating system. This provides 40-bit or 128-bit encryption, user name and password authentication and support for up to 128 PPTP tunnels.

**State-of-the-Art Firewall Security.** The RouteFinder provides network layer security utilizing Stateful Packet Inspection, the sophisticated firewall technology found in large enterprise firewalls, to protect the network against intruders and Denial of Service (DoS) attacks. It also uses Network Address Translation (NAT) to hide internal, non-routable IP addresses and allows internal hosts with unregistered IP addresses to function as Internet-reachable servers. In addition to network layer security, it provides application level security using SMTP, HTTP, DNS and SOCKS proxies. The RouteFinder also utilizes filters to block specific Internet content to protect against viruses, dangerous ActiveX controls, Java, Javascript, and Cookies. An automatic update feature provides the highest level of security by automatically downloading and installing the latest system software and security patches protecting against any newly discovered hacker attacks with a single click.

**E-mail Anti-Virus Protection.** Computer viruses are one of the leading security threats to Internet-connected networks. Users can unknowingly download and launch dangerous viruses that can damage data or cause computer crashes. Viruses can also be used as delivery mechanisms for hacking tools, compromising the security of the network, even if a firewall is installed. An optional e-mail virus protection subscription utilizes a high-performance, ICSA-tested, anti-virus engine which checks both incoming and outgoing e-mail for viruses in real-time. Automatic anti-virus updates are downloaded at user-defined intervals to ensure protection is current. The e-mail anti-virus protection can be easily renewed on an annual basis. Ask about our free 30-day evaluation.

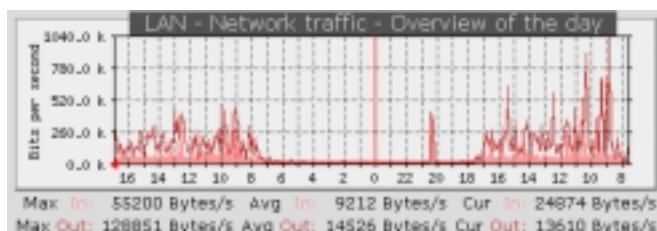
**User Authentication.** To increase the level of security, user identity can be verified before access to Internet services is permitted. The RouteFinder supports authentication at a local user database as well as at external user databases, like Windows 2000 or Radius server.

**Web Caching Server.** To enhance performance, the RouteFinder also provides web caching. By storing frequently visited web sites on a local drive, web surfing performance can be improved by as much as 50%.

**Robust, Easy-to-Use Management.** The RouteFinder includes robust management support allowing a network administrator to securely manage the devices either through a web browser or at the command line. The browser-based option uses the HTTPS protocol, also known as SSL (Secure Sockets Layer) to provide 128-bit encryption to secure the management session. The command line interface is accessible via SSH (Secure Shell) and supports SCP (Secure Copy).



**Reporting.** The RouteFinder also includes a suite of integrated monitoring and reporting tools that help administrators troubleshoot the Internet security system and report Internet usage to management. This includes reporting on system uptime, hardware and network utilization. As well as, HTTP and SMTP proxy reports, provides information about any actions needed to handle virus-infected e-mails. The RouteFinder also disables and logs attempted port scans. In addition, it provides accounting reports and a selfmonitor that sends an e-mail notification of system-level issues.



**Optional VPN Client Software.** Multi-Tech provides an easy-to-use IPSec VPN client that transparently secures your Internet communications anytime, anywhere. VPN client software is ideal for business users who travel frequently or work from home. It provides secure remote access through the RouteFinder VPN gateway for applications such as remote access, file transfer, e-mail, Web browsing, messaging or IP telephony. Encryption and authentication operations are completely transparent to the end user. In general, IPSec provides stronger encryption than PPTP resulting in better overall security.



**SOHO RouteFinder.** The SOHO RouteFinder is ideal for the small branch office or telecommuter who needs secure access to the corporate LAN. In addition to providing a WAN Ethernet port for DSL or cable broadband Internet access, it also offers both client-to-LAN and LAN-to-LAN VPN connectivity based on the IPSec protocol. It supports up to 5 IPSec tunnels and provides 3DES encryption with 700K bps throughput. See features comparison chart on the back of this datasheet.

**Multi-Tech RouteFinder Family.** As a complement to the RouteFinder Internet security appliance, Multi-Tech has developed a line of RouteFinder solutions that provide cost-effective and easy to install Internet access for everyone on the network. The dial-up RouteFinder offers shared V.90/56K or ISDN Internet access when connected to external modems. The broadband models offer shared Internet access while utilizing DSL or cable connections. And, the wireless model provides connectivity to the Internet without installing or moving wires. Multi-Tech RouteFinder solutions were designed with the small-to medium-sized businesses in mind to provide flexible and scalable Internet connectivity for network users.

**Comprehensive Service and Support.** The Multi-Tech commitment to service means we provide a two-year product warranty and service that includes telephone technical support, 24-hour web site and ftp support.

Features	RF650VPN	RF550VPN (SOHO Model)
<b>Appliance</b>		
Ethernet Ports	3 x 10/100BaseT (LAN, WAN, DMZ)	4 x 10/100BaseT (LAN) 1 x 10BaseT (WAN)
Number of Network Users	Unlimited	Unlimited
Rackmount/Standalone	Yes	Standalone
<b>VPN Features</b>		
Remote User (Client-to-LAN)	Yes	Yes
Branch Office (LAN-to-LAN)	Yes	Yes
3DES Encryption (168-bit)	Yes	Yes
3DES Throughput	15M bps	700K bps
IPSec VPN	Yes	Yes
IKE	Yes	Yes
Number of Tunnels (IPSec)	256	5
PPTP VPN (40-bit/128-bit)	Yes	No
Number of Tunnels (PPTP)	128	N/A
<b>Firewall Features</b>		
Anti-Virus Option	Yes	No
Application Proxies	Yes	No
Port and IP Filtering	Yes	Yes
Denial of Service Protection (DoS)	Yes	Yes
Stateful Packet Inspection	Yes	No
Network Address Translation (NAT)	Yes	Yes
Web Caching	Yes	No
Virtual Server	Yes	Yes
Port Scan Detection	Yes	No
<b>Management Features</b>		
E-Mail Alerts	Yes	No
Local and Remote Management	Yes	Yes
Logging	Yes	Yes
Reporting	Yes	No
Web Based	HTTPS/SSL	HTTP
Security Socket Layer (SSH)	Yes	No
Syslog	Yes	Yes
<b>Other Features</b>		
Shared Internet Access	Yes	Yes
User Authentication (Web Access)	Yes	No
Automatic Firmware Downloads	Yes	No
Warranty	2-years	2-years
<b>Specifications</b>		
Power	100-240v AC, 50/60Hz	5 VDC, 2A
Physical Description	17" w x 1.75" h x 10.5" d 10 lbs. (1U rack mountable) (43.18 cm x 4.45 cm x 26.67 cm; 4.54kg.)	7.1" w x 4.9" h x 1.4" d 13 oz. (18.1 cm x 12.5 cm x 3.5 cm; 380 g.)
<b>Operating Environment</b>		
Temperature Range	32° - 120° F (0° - 50° C)	32° - 120° F (0° - 50° C)
Humidity	25-85% noncondensing	25-85% noncondensing
Approvals	FCC Part 68, FCC Part 15 (Class A), CE Mark, UL60950	FCC Part 15 (Class B), CE Mark, UL60950

## Ordering Information

Product	Description	Region
RF650VPN	Internet Security Appliance	US/Can
RF650VPN-Euro*	Internet Security Appliance	Europe
RF550VPN	SOHO Internet Security Appliance	US/Can
RF550VPN-Euro*	SOHO Internet Security Appliance	Europe

\* These products may have country specific versions for regions not listed. Specify country when ordering.

RFIPSC-1	IPSec VPN Client-1 User	Global
RFIPSC-5	IPSec VPN Client-5 User	Global
RFIPSC-10	IPSec VPN Client-10 User	Global
RFIPSC-50	IPSec VPN Client-50 User	Global
RFAVUPG	One Year Anti-virus Upgrade	Global

Made in Mounds View, MN, U.S.A.

**Trademarks:** MultiVOIP Gatekeeper, Multi-Tech, and the Multi-Tech logo: Multi-Tech Systems, Inc. / All other products or technologies are the trademarks or registered trademarks of their respective holders.

**World Headquarters**  
Tel: (763) 785-3500  
(800) 328-9717

[www.multitech.com](http://www.multitech.com)

**Multi-Tech Systems (France)**  
Tel: +(33) 1 64 61 09 81

**Multi-Tech Systems (UK)**  
Tel: +(44) 118-959 7774